

CP Series Wide Area Radiant Heaters (cont'd.)

The CPH, CPL and CPLI are medium wave heaters. Micron levels between 2.5 and 6 of infrared energy are generated. At these micron levels the majority of the infrared energy generated falls into the medium wave section of the infrared spectrum.

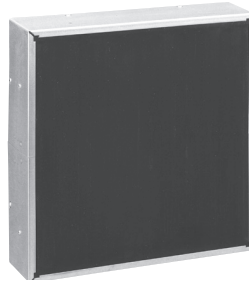
Outer edges of the element can have gradual increasing wattage density to compensate for production edge losses.

Single elements or multiple elements can be zoned and wired to achieve specific profiles. Different width materials can be processed by turning off elements.

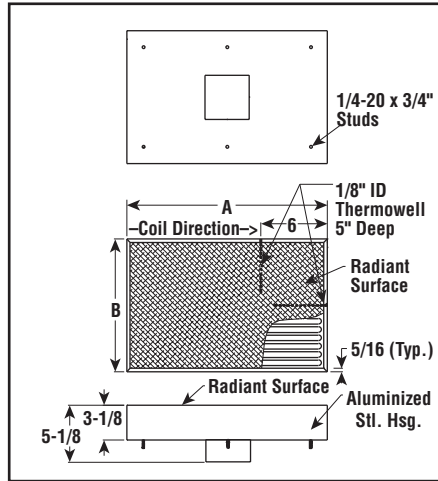
Easy to Control — The use of time proportioning control with closed loop feedback, such as Chromalox 2104 temperature controllers, magnetic contactors or SCR power controllers assure easy and dependable system control. Thermowells may be offered in two locations in the heater interior. Suitable to accept Chromalox standard thermocouples, they sense emitter temperature ensuring accurate wavelength emission. Fast response time of the unit reduces thermal lag.

Overtemperature Control — It is strongly recommended that these units be controlled such that overheating and premature failure do not occur. This is of particular importance in oven usage, where high ambient temperatures exist.

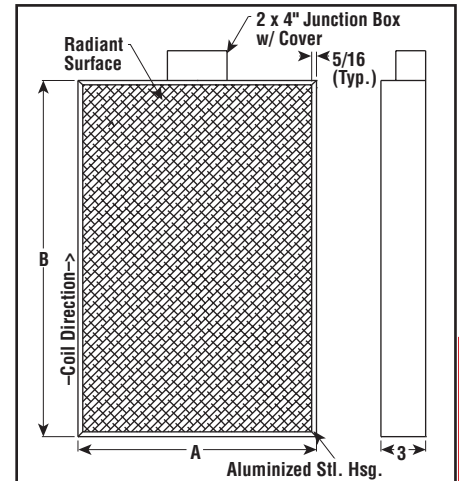
CAUTION — Hazard of Fire. These radiant heaters must not be operated in the presence of flammable vapors, gases or combustible materials without proper ventilation and/or other safety precautions in compliance with either the National Fire Protection Bulletin 86A entitled "Ovens and Furnaces" or the authority having jurisdiction.



CPH & CPL — Dimensions (Inches)



CPLI — Dimensions (Inches)



Specifications and Ordering Information

kW	Volts	Phase	W/In ²	DIM (In.)		Thermo-well	Mtg. Studs	Model	Stock	PCN	Wt. (Lbs.)
				A	B						
1.1	120/240	1	15	6	12	Yes	2	CPL-0612T	NS	223790	3
1.8	240/480	1	25	6	12	Yes	2	CPH-0624T	S	223802	3
1.3	230	1	10	12	12	No	4	CPLI-1212-13	NS	224506	6
2.2	240/480	1	15	12	12	Yes	4	CPL-1224T	S	223810	6
3.6	240/480	1	25	12	12	No	4	CPH-1224	NS	223829	6
3.6	240/480	1	25	12	12	Yes	4	CPH-1224T	NS	223837	6
1.8	230	1	5	16	16	No	4	CPLI-1616-18	NS	224514	11
0.55	230	1	5	6	18	No	4	CPLI-0618-05	NS	224469	5
1	230	1	10	6	18	No	4	CPLI-0618-10	NS	224477	5
1.3	230	1	10	6	24	No	4	CPLI-0624-13	NS	224485	6
3.5	230	1	10	16	24	No	4	CPLI-1624-35	NS	224522	16
3.75	230	1	5	24	24	No	4	CPLI-2424-37	NS	224530	24
4.3	240/480	1	15	24	12	Yes	4	CPL-2424T	NS	223845	12
7.2	240	3	25	24	12	No	4	CPH-2423	NS	223853	12
7.2	240	3	25	24	12	Yes	4	CPH-2423T	NS	223861	12
7.2	480	3	25	24	12	No	4	CPH-2443	S	223870	12
7.2	480	3	25	24	12	Yes	4	CPH-2443T	S	223888	12
1.55	230	1	10	6	30	No	4	CPLI-0630-15	NS	224493	8
8.6	240	3	15	48	12	Yes	6	CPL-4823T	NS	223896	24
8.6	480	3	15	48	12	No	6	CPL-4843	NS	223909	24
8.6	480	3	15	48	12	Yes	6	CPL-4843T	NS	223917	24
14.4	240	3	25	48	12	Yes	6	CPH-4823T	NS	223925	24
14.4	480	3	25	48	12	Yes	6	CPH-4843T	S	223933	24
10.8	480	3	15	60	12	Yes	6	CPL-6043T	S	223941	30
18	240	3	25	60	12	Yes	6	CPH-6023T	NS	223950	30
18	480	3	25	60	12	Yes	6	CPH-6043T	S	223968	30

Stock Status: S = stock NS = non-stock
To Order— Specify model, PCN, kW, volts, phase and quantity.